

ArcLink 4 RGBWW™



The perfect companion to the ArcLine range, Arclink adds a flexible dimension to linear LED lighting, combining high power LED with Cat 5 connection and excellent thermal management, the complete ArcLink can be installed virtually anywhere.

TECHNICAL SPECIFICATIONS:

Power Supply Required: See Below Listing
 Max Power Consumption: 4.5W
 Available Beam Angles: See Pg 4
 Impact Rating: IK **
 Ingress Protection Rating: IP2X
 Light Source: High Power LED's
 LED Life Expectancy: Min 50000 Hrs
 Typical Lumen Maintenance: 70% @ 50000 hrs

Construction: Aluminium Base
 Fixing Method: Mounting Bracket
 Product Weight: 0.05kg
 Operating Ambient Temp Range: -20°C/+40°C
 Operating Temp: +50°C @ Ambient +40°C
 LED Colour Variants: See Pg 4
 Cooling System: Convection

For further information regarding optical systems please visit the website: www.anolis.eu

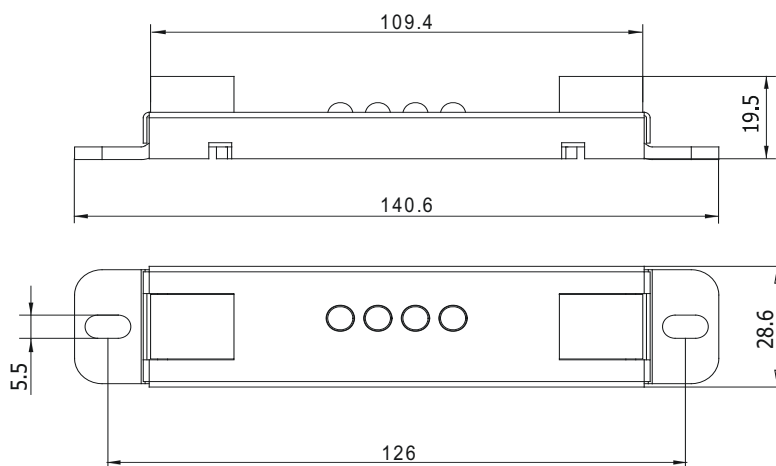
Accessories:

Patch Cables
 Termination Plug

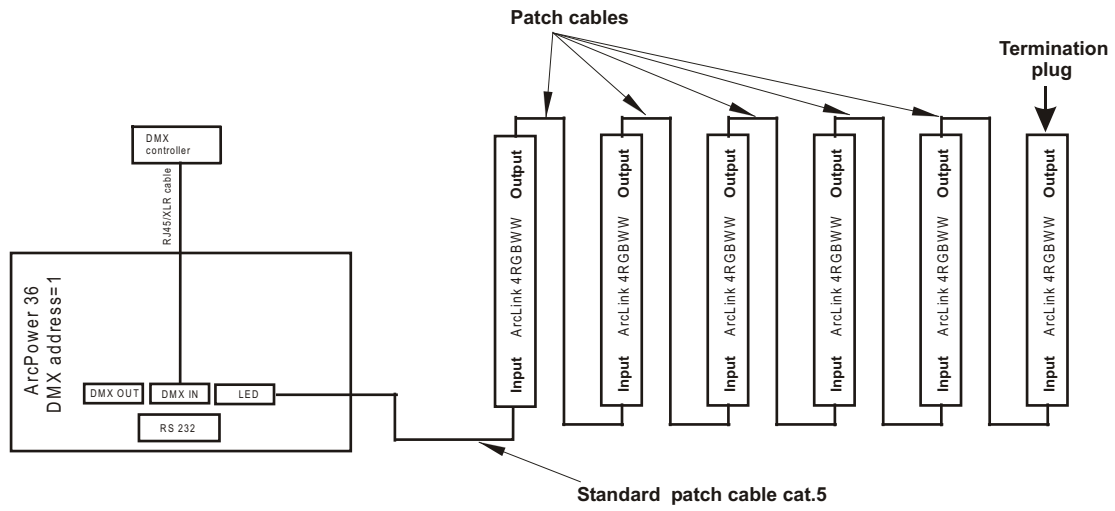
Compatible Drivers:

ArcPower 36, 72, 144, 360, 16x6, 16x12, RM384

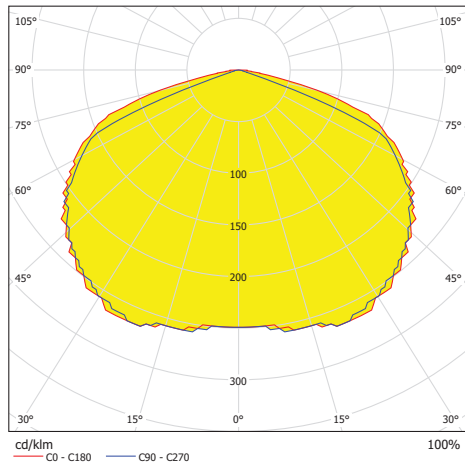
DIMENSIONAL DRAWINGS:



CONNECTION SCHEME:

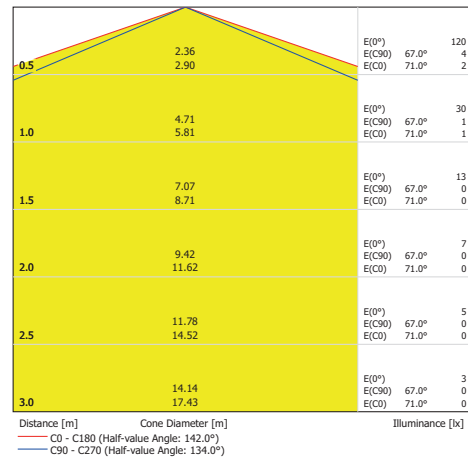


LDC Polar

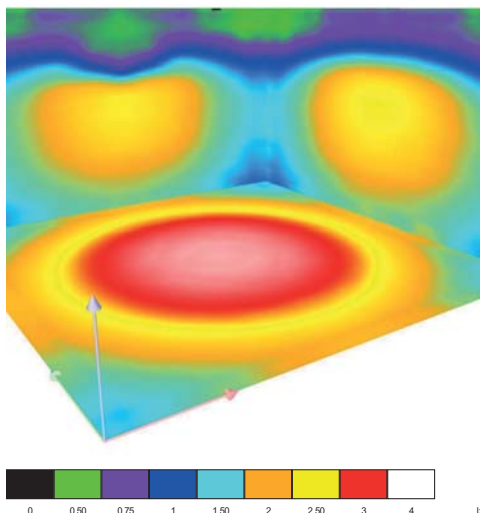


Cone Diagram

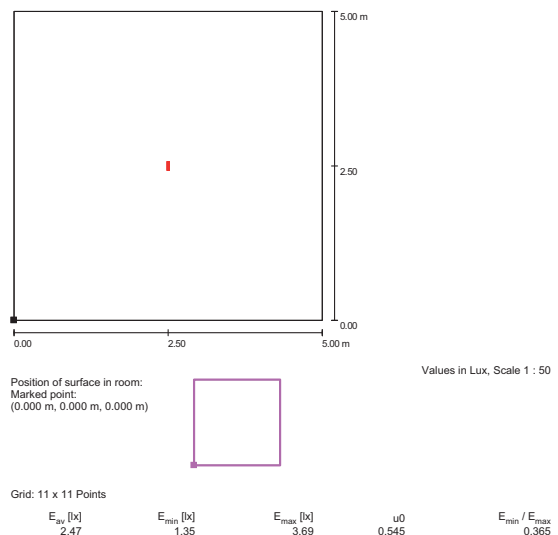
Luminaire: Anolis 1006 0941 ArcLink 4 RGBWW
Lamps: -4 x Luxeon K1



Colour Rendering

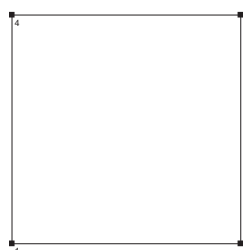


Floor Isolines (E)



Room Details

Height of working plane: 0.850 m
Boundary Zone: 0.000 m
Maintenance factor: 0.80
Height of Room: 2.800 m
Ground area: 25.00 m²



Total Luminous Flux: 120 lm
Total Load: 9.0 W
Maintenance factor: 0.80
Boundary Zone: 0.000 m

Surface	Rho [%]	from ([m] [m])	towards ([m] [m])	Length [m]
Floor	20	/	/	/
Ceiling	70	/	/	/
Wall 1	50	(0.000 0.000)	(5.000 0.000)	5.000
Wall 2	50	(5.000 0.000)	(5.000 5.000)	5.000
Wall 3	50	(5.000 5.000)	(0.000 5.000)	5.000
Wall 4	50	(0.000 5.000)	(0.000 0.000)	5.000

PRODUCT SPECIFICATION CHART:

ACCESSORIES:

1006 0946	B
1006 0945	R
1006 0942	RGBA
1006 0943	RGBCW
1006 0941	RGBWW
1006 0944	SW
1006 0947	WW

Other variants available on request